

Other important features of your *GyneFix*[®]

GyneFix[®] for emergency contraception

GyneFix[®] is of significant value in emergency contraception as it can be inserted up to 5 days following unprotected intercourse and on some occasions even later. This compares very favourably with hormone based post-coital pills which only prevent 3 out of 4 pregnancies and need to be taken within 72 hours.

Following the emergency, your *GyneFix*[®] will provide ongoing contraception until it is removed.

GyneFix[®] in young childless women

GyneFix[®] is the only IUD that can be fitted with confidence to childless women. In the past the older, larger IUDs, were not recommended until after a child had been delivered,

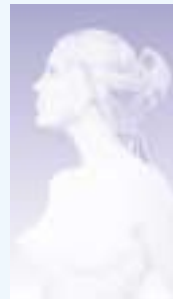
GyneFix[®] as an alternative to sterilisation

According to research around 50% of UK couples over the age of 40 prevent pregnancy by means of the sterilisation of one or the other partner. This involves surgical procedures that many people are reluctant to undergo; it is also difficult to reverse. Statistics show that although it involves further surgery, and is not always successful, almost 20% of sterilised women still seek a reversal.

GyneFix[®] offers women an effective, long term and as importantly, reversible alternative to sterilisation.

GyneFix[®] post-termination

GyneFix[®] can also be used immediately after termination of pregnancy. *GyneFix*[®] is already being used in this way in the UK and many other countries, to provide immediate effective and ongoing contraception.

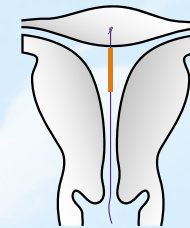


Control

www.wildemeersch.com



MINIATURE INTRAUTERINE CONTRACEPTIVE



GyneFix[®]

The *GyneFix*[®] Contraceptive System

Outstanding protection for today's woman

The new copper contraceptive that you wear

What is *GyneFix*®?

GyneFix® is a new type of contraceptive specifically designed to be worn discreetly by most women.

You and your *GyneFix*®

GyneFix® is a tiny little contraceptive implant that you wear.

GyneFix® is painlessly fitted to the muscle at the top of your womb and can then be easily forgotten. However this unique little contraceptive will provide you with the peace of mind that comes from an ongoing contraceptive reliability similar to the Pill.

GyneFix® looks like a small necklace of copper "beads" (6 for standard *GyneFix*® and 4 for mini *GyneFix*®) with a tiny knot at one end.

Why was *GyneFix*® developed?

Doctors have always considered the IUD to be one of the most reliable forms of contraception. However older generation intrauterine devices (IUDs) were not altogether favoured by women, many of whom complained of pain, discomfort heavy bleeding and unintended expulsion in use.

The new generation *GyneFix*® has been specially designed to be virtually trouble free whilst maintaining superior levels of reliability, ease of use and the spontaneity in relationships which women and their partners welcome.

GyneFix® is:

- Highly effective in preventing pregnancy
- Easy to insert and remove
- Has few side effects
- Rapid return of fertility on removal
- Not readily dislodged or expelled

In addition, *GyneFix*®:

- Suits most women
- Can stay in place for five years

And unlike the Pill, once fitted, *GyneFix*® can be forgotten

How effective is *GyneFix*®?

More than twelve years of research and development have gone into today's *GyneFix*®. During this time over 15,000 women years of experience with *GyneFix*® have been studied, covering women of all ages, both with children and currently childless.

This experience shows rates of unintended pregnancy at much lower levels than with older IUDs and at a similar level to that found with the Pill **provided that this is taken without interruption.**

In addition one of the major medical problems found with older IUDs, ectopic pregnancy has not occurred either in use or in any *GyneFix*® clinical study.

How does *GyneFix*® prevent pregnancy?

The copper "beads" kill sperm and prevent fertilisation of the egg.

Does *GyneFix*® have any side effects?

Following *GyneFix*® insertion slight bleeding that lasts for a few days may occur; you may also experience heavier periods for the first few months of *GyneFix*® use.

As your body accustoms itself to your *GyneFix*®, you will find that any increased bleeding or spotting you experience will tend to lessen. After a few periods your bleeding patterns will steadily return to normal.

Very few cases of pelvic infection have been reported with *GyneFix*® in either clinical trials or day to day use. However, it should be borne in mind that any woman who is not in a long term one to one relationship is at increased risk of contracting a sexually transmitted infection (STI) when compared to those in long-term relationships with one partner.

Is *GyneFix*® easy to insert & remove?

Your doctor can easily fit your *GyneFix*® during a normal surgery visit.

Before She / He fits, *GyneFix*®, your doctor will examine you to check the position of your womb and to ensure that everything else feels normal.

She / He will then measure the size of your womb to ensure that your *GyneFix*® is correctly positioned and the anchoring knot is securely attached to the upper wall of the womb.

This careful fitting is important to ensure that the tiny *GyneFix*® does not fall out.

When you wish to add to your family, your *GyneFix*® is simply removed by your doctor in Her/ His surgery.

If you are already using an effective method of contraception, such as the Pill or injection, your *GyneFix*® can be fitted at any time during your menstrual cycle. However if you are using less effective methods, such as sheaths, diaphragm or withdrawal, or if there is any risk of pregnancy, it is advisable to insert *GyneFix*® during or shortly after your menstrual period.

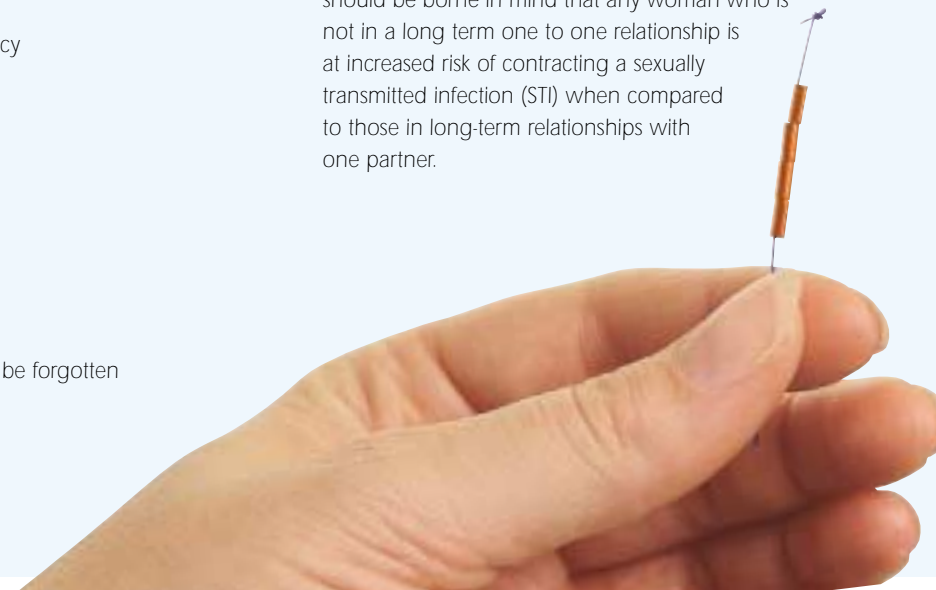
Your doctor may wish you to return for a routine visit one or two months after your *GyneFix*® has been fitted.

Rapid return of fertility on removal

When your *GyneFix*® is removed your fertility will quickly return to normal. This is a marked advantage over the Pill, as when many women stop taking the pill, they experience a delay as their natural hormones re-adjust.

Not readily dislodged or expelled

Your *GyneFix*® is tiny and, when correctly fitted, firmly anchored to your body. Being extremely flexible, *GyneFix*® moves in harmony with you irrespective of activity or the time of the month. This means that few side effects such as pain and bleeding are experienced and very few cases of expulsion have been reported.



The *GyneFix*® mini
intrauterine contraceptive implant

